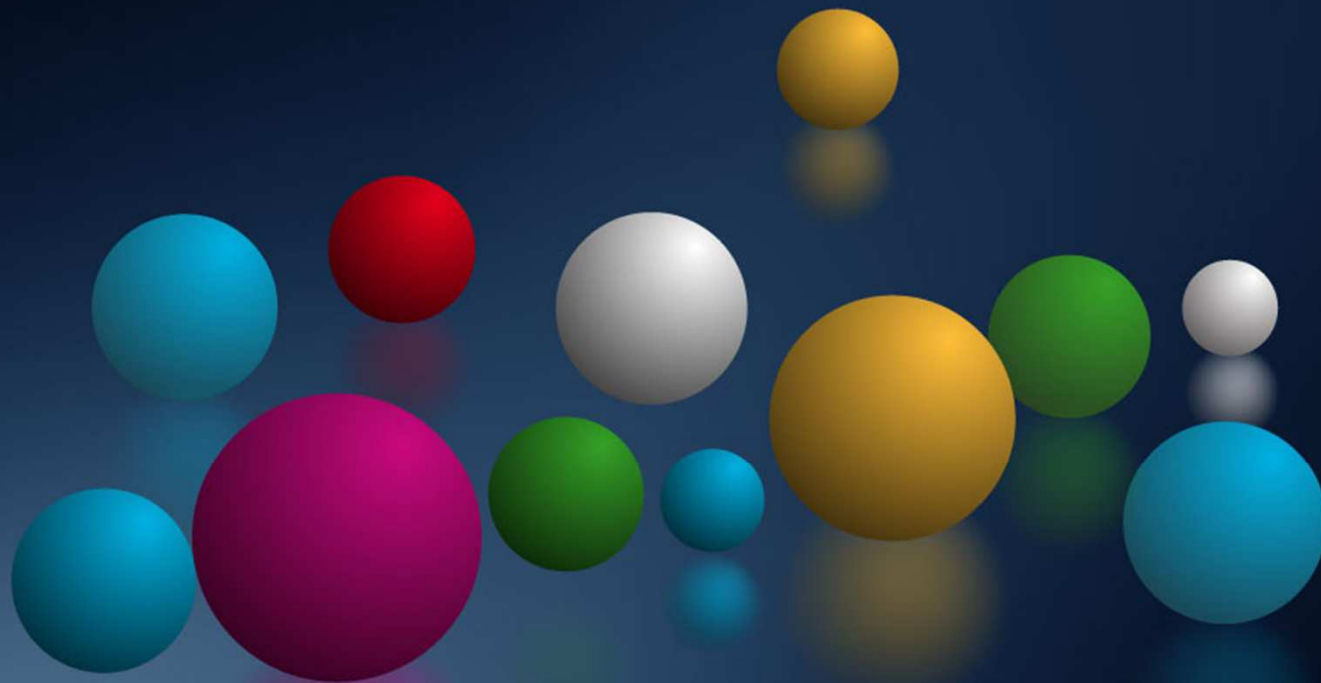


# Best practices in guidance and counselling



ME

# Some evidence

- **Legislation/ educational policy**
- **Curricula**
- **Educational resources**
- **Programme and projects**
- **Learning community**
- **Attitude**

# POSDRU/ ESF

- <http://portal.mvp-educational.ro>  
**Managementul vieții personale/ CMBRAE**
- **Monitorizarea inserției absolvenților de învățământ profesional și tehnic pe piața muncii CMBRAE**
- **Consilieri mai bine pregătiți/ CMBRAE**


””

# Widening the future. Improving guidance interventions at school

Project 527969-LLP-1-2012-1-IT-COMENIUS-CMP



How can we help children  
to turn their dreams into  
real vocational and  
educational projects?



**Questions, no  
answers put in  
the movement the  
future!**

**(K. Nordstrom, J. Ridderstrale, 2009)**

A decorative graphic on the left side of the slide, featuring a dark blue vertical bar with a white curved line. At the bottom of this bar, several colorful spheres (red, white, cyan, magenta, green) are arranged on a reflective surface.

# Thank you!

[m\\_marcinschi@yahoo.com](mailto:m_marcinschi@yahoo.com)